

Boardwalk

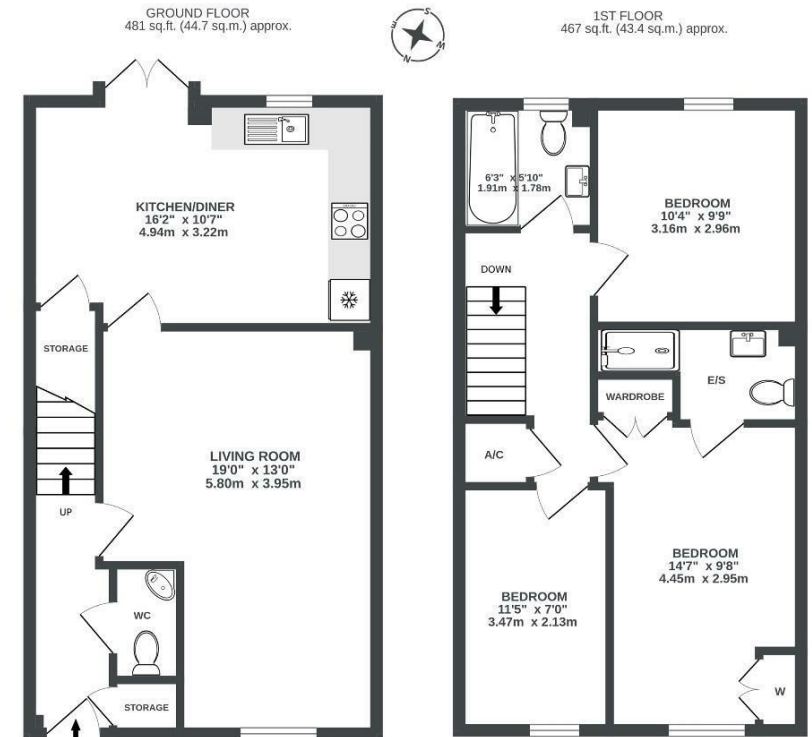
# Casey Close

, BRISTOL

## Casey Close

FILWOOD PARK

APPROXIMATE FLOOR AREA  
88 SQM / 948 SQFT



Illustrations are for reference purposes only, measurements are approximate, not to scale.

**Boardwalk**

# Casey Close , BRISTOL



£345,000



Bristol, BS4

1 ER



3 Bedrooms



3 Bathrooms

*"This has been a fantastic first home for the two of us, our dog and cat. Being at the end of a cul-de-sac means it is lovely, quiet, and safe and the community feel in Casey Close is wonderful. Our road is very friendly, and we've gotten on well with all of our neighbours since we moved in February 2020! Despite being located just off Hengrove Way, Filwood Park has always been quiet and secluded, and the park on the estate is well-maintained and provides a great space for an evening run around for our dog. It's extremely easy to walk to Temple Meads from the house, and have we ever had an issue getting an Uber to and from the city centre. Best news yet, Voi Scooters now come out to this estate too!"*

